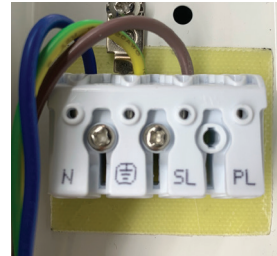


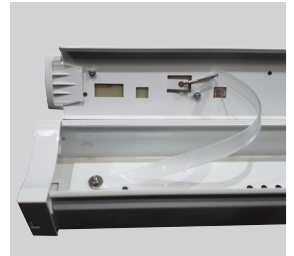
## Lineout CCT Plug & Play Datasheet

5ft 29W/36W/44W/52W Selectable 7800Lm LED Batten

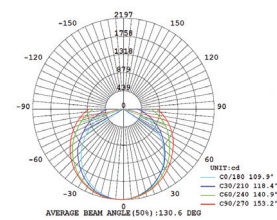
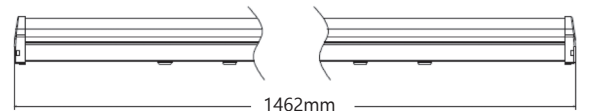
PXLINE552V4



Push fit terminal block for fast installation.



Gear tray retaining strap for easy maintenance.



<b>Dimensions</b>	1462*62*74 (5ft)
<b>Weight</b>	1.55kg
<b>Material</b>	Steel Body & PC Diffuser
<b>Colour/Finish</b>	White
<b>IK Rating</b>	IK08
<b>Voltage/Frequency</b>	180-240V 50/60Hz
<b>Luminous Flux</b>	7,800Lm
<b>Luminous Efficacy</b>	150Lm/W
<b>Color Rendering Index</b>	≥80
<b>CCT Colour Temp</b>	3000K/4000K/6000K
<b>SDCM Colour Consistency</b>	≤6
<b>UGR Unified Glare Rating</b>	-
<b>LEDs</b>	SMD 2835 (70pcs)
<b>Light Control</b>	On/Off
<b>Beam Angle</b>	120°
<b>Adjustable</b>	Fixed
<b>Chip</b>	Epistar
<b>Maintained Luminous Flux</b>	50,000h (L80B10), 65,000h (L70B50)
<b>Warranty</b>	5 Years Fitting

### Features & Applications

The Prelux Lineout Plug & Play CCT is a highly efficient LED batten which produces an impressive 150lm/W and provides instant full light.

The Lineout comes with a push fit terminal block for fast and hassle free installation as well as a gear tray retaining strap to allow for easy maintenance.

The luminous efficacy and 5 year warranty of the Lineout makes it an ideal fitting for public buildings such as libraries, schools and hospitals as well as private commercial offices and retail stores.

Plug & Play Options Available	
<b>3 Hr Emergency Kit</b>	PXVAPEMKITPP
<b>Corridor Kit</b>	PXVAPMWKITCOR
<b>Microwave Kit</b>	PXVAPMWKITPP