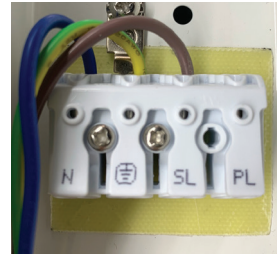


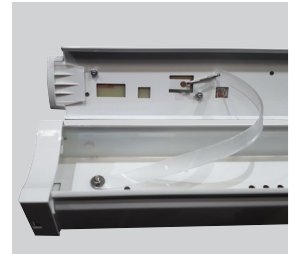
## Lineout 50W Standard Datasheet

5ft Colour Temperature Selectable 6750lm LED Batten

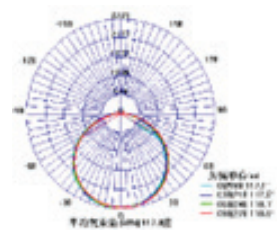
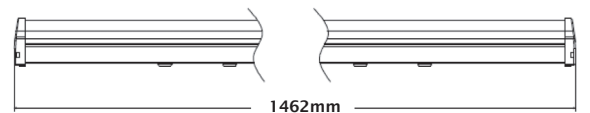
PXLINE550CCT



Push fit terminal block for fast installation.



Gear tray retaining strap for easy maintenance.



|                                 |                          |
|---------------------------------|--------------------------|
| <b>Dimensions</b>               | 1462*62*74 (5ft)         |
| <b>Weight</b>                   | 1.7kg                    |
| <b>Material</b>                 | Steel Body & PC Diffuser |
| <b>Colour/Finish</b>            | White                    |
| <b>IK Rating</b>                | IK08                     |
| <b>Voltage/Frequency</b>        | 220-240V 50Hz            |
| <b>Luminous Flux</b>            | 6750lm                   |
| <b>Luminous Efficacy</b>        | 135Lm/W                  |
| <b>Color Rendering Index</b>    | >80                      |
| <b>CCT Colour Temp</b>          | 3000K/4000K/6000K        |
| <b>SDCM Colour Consistency</b>  | <4                       |
| <b>UGR Unified Glare Rating</b> | <22                      |
| <b>LEDs</b>                     | Everlight                |
| <b>Light Control</b>            | On/Off                   |
| <b>Beam Angle</b>               | 120°                     |
| <b>Adjustable</b>               | Fixed                    |
| <b>Chip</b>                     | Epistar                  |
| <b>Maintained Luminous Flux</b> | L80 (B10) 50,000h        |
| <b>Warranty</b>                 | 5 Years                  |

### Features & Applications

The Prelux Lineout CCT is a highly efficient LED batten which produces an impressive 135lm/W and provides instant full light.

The Lineout comes with a push fit terminal block for fast and hassle free installation as well as a gear tray retaining strap to allow for easy maintenance.

The luminous efficacy and 5 year warranty of the Lineout makes it an ideal fitting for public buildings such as libraries, schools and hospitals as well as private commercial offices and retail stores.