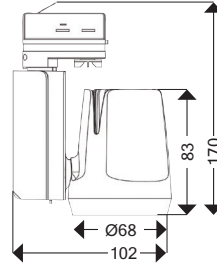
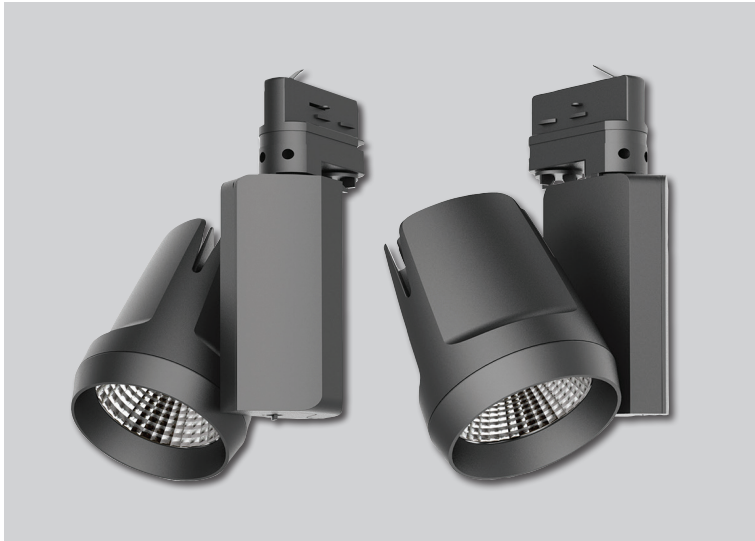


Nico Dim Black 15W Datasheet

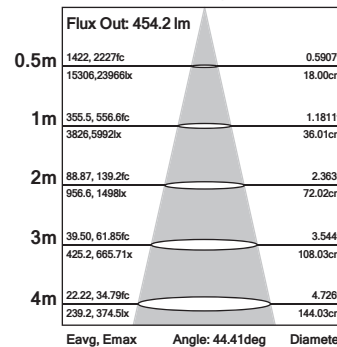
3000K 1350Lm LED Track Spotlight

PX15BL3K



| | |
|------------------------------------|-----------------|
| Input Rated Voltage | AC230V |
| Frequency | 50Hz |
| Input Voltage | AC220-240V |
| Efficiency | ≥85% |
| Total Load Wattage | 15W±1W |
| Power Factor | ≥0.9 |
| Lumen Output ±5% | 1350lm |
| Beam Angle | 24° |
| CCT | 3000K |
| Lifespan | 50000h |
| CRI | ≥80 |
| Dimensions | L102*W68*H170mm |
| Rated Input Current | ≤0.1A |
| Full Load Output Voltage | DC25-42V |
| Rated Output Current | 350mA |
| Output Current Range | 350mA±5% |
| Power Tolerance | ±5% |
| Current Output Tolerance | ±5% |
| Short Circuit Protection | PASS |
| Over Voltage Protection | PASS |
| Over Temperature Protection | PASS |
| THD | ≤18% |
| Withstand Voltage | AC1500V |

Beam Angle



Features & Applications

Nico 15W adjustable adopts CREE LEDs with excellent color rendering index to increase the color fidelity of the target illuminated object and provide an even light output without glare or dark spots. Nico 15W adjusts 360° degrees horizontally and 180° vertically.

- Environment friendly, without Mercury or other hazardous substances
- Up to 70% energy saving compared to standard CFL
- Adjustable 360° degrees horizontally, 180° degrees vertically
- Long lifetime of 50,000 hours
- 24° beam angle
- CCT: 3000K
- No UV/IR light