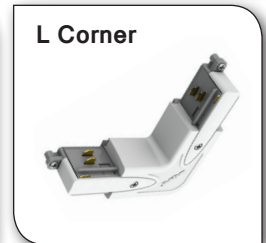
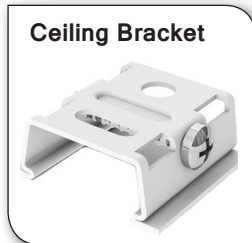
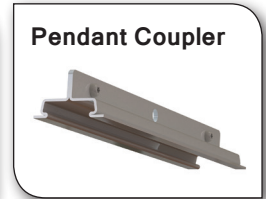
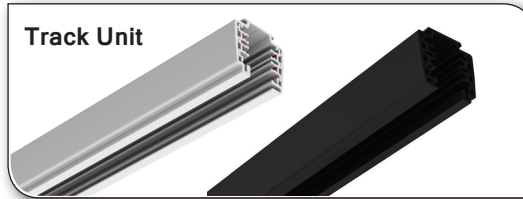




## Unipro Product Codes

	White Version	Black Version
2m Track Unit	P1459102	P1459302
3m Track Unit	P1459103	P1459303
Jointing Unit	P1459199	P1459199
Ceiling Bracket	P1459401	P1459403
L Corner	P1459141	P1459341
Pendant Coupler	P1459431	P1459433
Power Take Off	P1459011	P1459012
Connection Unit	P1459121	P1459321
End Cap	P1459181	P1459381
Wire Suspension	P1459411	



## Unipro Materials

Frame Material	Extruded Aluminium
Insulation Profiles	Plastic
Phase & Neutral Conductors	2.5mm <sup>2</sup> Rectangular Copper
Plastic Accessory Material	Self Extinguishing Polycarbonate, Class V0
Surface Treatment	Powder Coated & Anodised
Available Colours <small>(Other RAL colours and treatments available by special order)</small>	White (RAL9010) Grey (RAL7040) Black (RAL9005)
Conductors	Three phase conductors (L1, L2 & L3) neutral (N) & ground (PE).
Protection Class	IP20
Quality and Safety	Tested in accordance with the standards EN60570 and EN60598
Other	Can be cut to size on site

### > Universal lighting track

The unipro® lighting track has been designed to be compatible with the most common spotlight systems.

### > Universal adapter

The unipro® A75 adapter is universal, and designed to be compatible with unipro® lighting tracks as well as with most other common 3-circuit lighting tracks.

### > Easy to cut

The standard lengths for unipro® lighting tracks are 2 and 3 metres, and can be cut to the correct length on the installation site. There is no need to bend or tool the power conductors after cutting.

### > Easy to install

The unipro® lighting track has

pre-cut holes on the top of the track, at 50 cm intervals.

### > Easy to connect

The unipro® lighting track system's power supply units have reliable and easy to use screw terminals, which are suitable for stranded or solid wires with a maximum cross section of 2.5 mm<sup>2</sup>.

### > Fewer parts

The unipro® lighting track systems L-corner and jointing unit are multi-functional. The polarity of the L-corner, and the colour of the jointing unit can be changed on site as necessary.